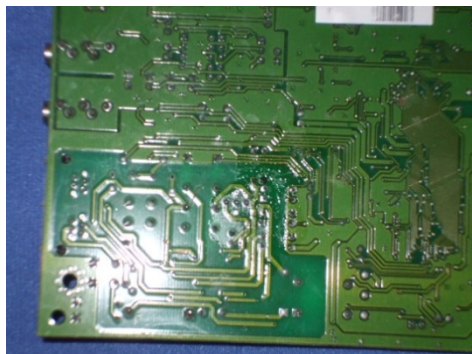


### Spot Cleaning of Flux Residues using Chemtronics® Flux-Off® BrushClean™ System and Coventry™ 6700 Lint Free wipes

Chemtronics® makes a wide array of Flux-Off® flux removers. Many are available in the BrushClean™ packaging, with each can providing a new brush for optimal cleaning. Choose the Flux-Off® product by matching it with the flux you are trying to remove. To properly choose a Flux-Off® brand flux remover, contact your Chemtronics® representative or go to [www.chemtronics.com](http://www.chemtronics.com).

Chemtronics® Coventry™ brand consists of a variety of swabs and wipers dedicated to precision cleaning of sensitive electronics. The 6700 series of polyester-cellulose lint free wipers are perfect for use in combination with Flux-Off® BrushClean™ brand flux removers when trying to ensure a clean solder joint with minimal solvent usage. Choose the proper wiper dimension according to your needs and preferences.

To use the Flux-Off® BrushClean™ flux remover and Coventry™ 6700 series wipers, place the Coventry™ wiper over the area to be cleaned:



Next attach the brush to your Flux-Off® BrushClean™ can and remove the plastic lock tab. Bring the brush against the wiper over the area to be cleaned. Dribble out a small amount of solvent while pressing down on the wiper firmly with the brush. Shortly you will see the flux wick up into the wipe. Remove the wiper and the area will be cleaned with minimal solvent usage.

